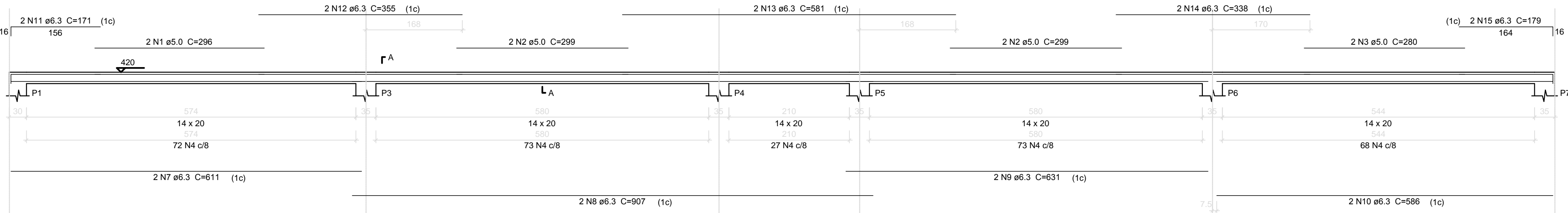
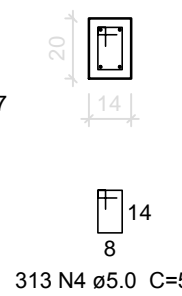


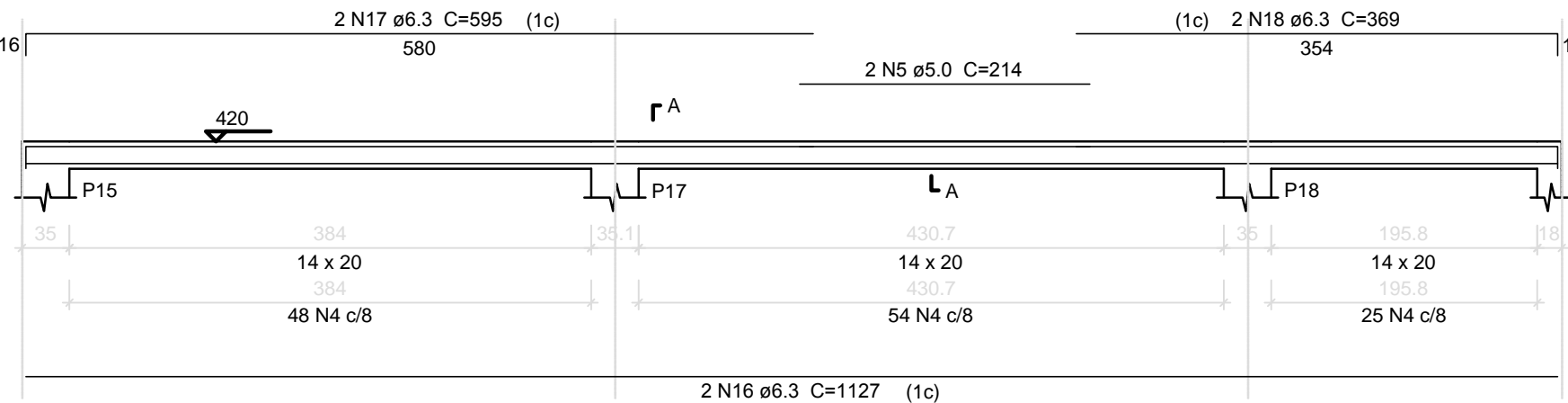
VP1
ESC 1:50



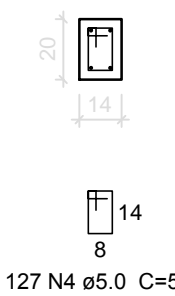
SEÇÃO A-A
ESC 1:25



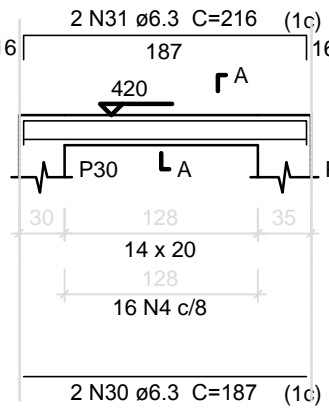
VP2
ESC 1:50



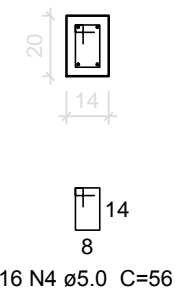
SEÇÃO A-A
ESC 1:25



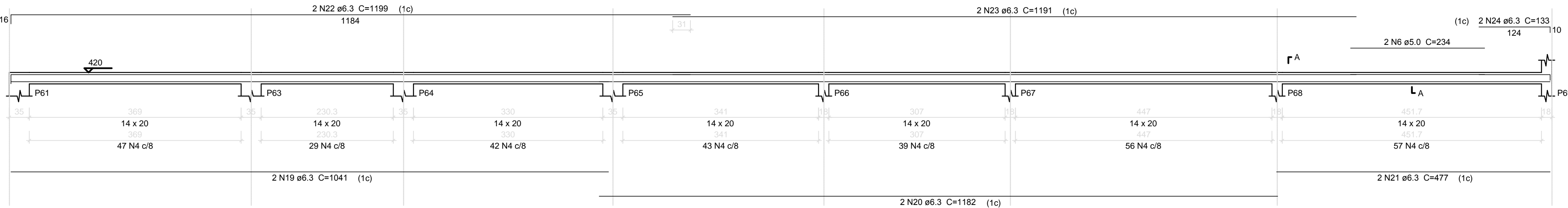
VP6
ESC 1:50



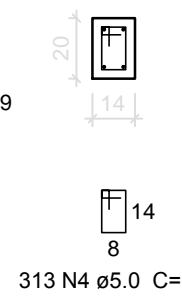
SEÇÃO A-A
ESC 1:25



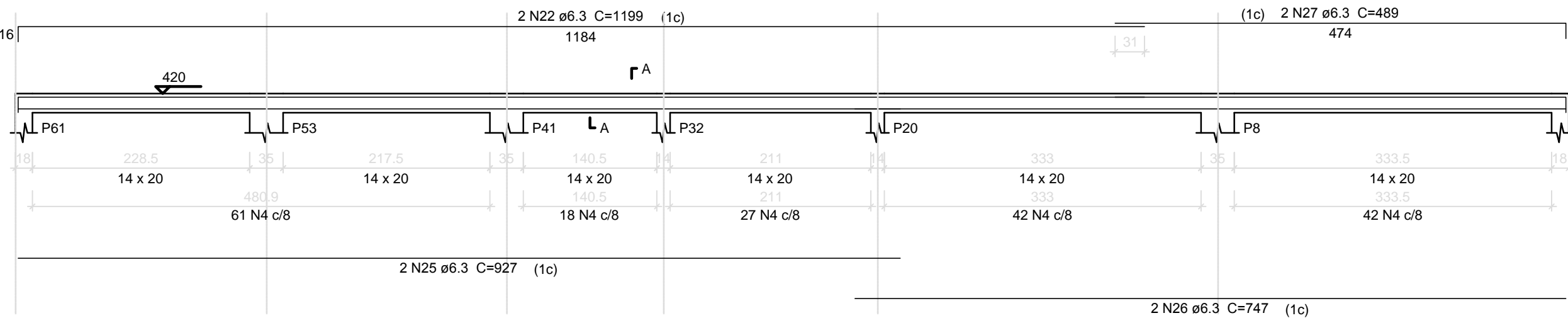
VP3
ESC 1:50



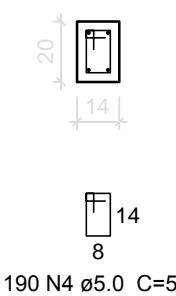
SEÇÃO A-A
ESC 1:25



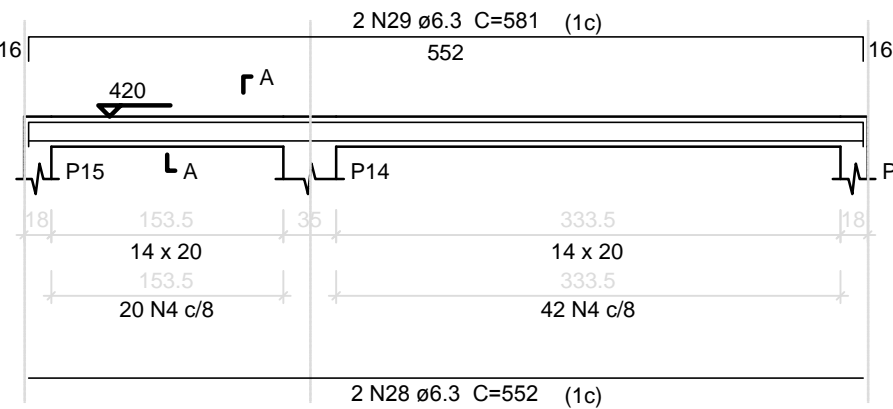
VP4
ESC 1:50



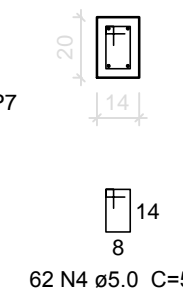
SEÇÃO A-A
ESC 1:25



VP5
ESC 1:50



SEÇÃO A-A
ESC 1:25



Relação do aço

| VP1 VP4 | | VP2 VP5 | | VP3 VP6 | |
|------------|----|--------------|-------|----------------|-----------------|
| AÇO | N | DIAM (mm) | QUANT | C.UNIT (cm) | C.TOTAL (cm) |
| CA60 | 1 | 5.0 | 2 | 296 | 592 |
| | 2 | 5.0 | 4 | 299 | 1196 |
| | 3 | 5.0 | 2 | 280 | 560 |
| | 4 | 5.0 | 1021 | 56 | 57176 |
| CA50 | 5 | 5.0 | 2 | 214 | 428 |
| | 6 | 5.0 | 2 | 234 | 468 |
| | 7 | 6.3 | 2 | 611 | 1222 |
| | 8 | 6.3 | 2 | 907 | 1814 |
| | 9 | 6.3 | 2 | 631 | 1262 |
| | 10 | 6.3 | 2 | 586 | 1172 |
| | 11 | 6.3 | 2 | 171 | 342 |
| | 12 | 6.3 | 2 | 355 | 710 |
| | 13 | 6.3 | 2 | 581 | 1162 |
| | 14 | 6.3 | 2 | 338 | 676 |
| | 15 | 6.3 | 2 | 179 | 358 |
| | 16 | 6.3 | 2 | 1127 | 2254 |
| | 17 | 6.3 | 2 | 595 | 1190 |
| | 18 | 6.3 | 2 | 369 | 738 |
| | 19 | 6.3 | 2 | 1041 | 2082 |
| | 20 | 6.3 | 2 | 1182 | 2364 |
| | 21 | 6.3 | 2 | 477 | 954 |
| | 22 | 6.3 | 4 | 1199 | 4796 |
| | 23 | 6.3 | 2 | 1191 | 2382 |
| | 24 | 6.3 | 2 | 133 | 266 |
| | 25 | 6.3 | 2 | 927 | 1854 |
| | 26 | 6.3 | 2 | 747 | 1494 |
| | 27 | 6.3 | 2 | 489 | 978 |
| | 28 | 6.3 | 2 | 552 | 1104 |
| | 29 | 6.3 | 2 | 581 | 1162 |
| | 30 | 6.3 | 2 | 187 | 374 |
| | 31 | 6.3 | 2 | 216 | 432 |

Resumo do aço

| AÇO | DIAM (mm) | C.TOTAL (m) | PESO (kg) |
|--------------------|--------------|----------------|--------------|
| CA50 | 6.3 | 331.5 | 81.1 |
| CA60 | 5.0 | 604.2 | 93.1 |
| PESO TOTAL (kg) | | | |
| CA50 | 81.1 | | |
| CA60 | 93.1 | | |

Volume de concreto (C-25) = 2.49 m³
Área de forma = 48.05 m²



EMEF SÍTIO FLORESTA

PROLONGAMENTO DA RUA ABRILINO FERREIRA CARDOSO, 2976
VIGAS PLATIBANDA - BLOCO D

Prancha

21/24

EQUIPE TÉCNICA DA SEPLAG

ARQ. ELISE LOPES DUTRA CAU A46844-4
ENG. PATRICIA WALTZER DA SILVA - CREA 139996

Escala

INDICADA

Data

FEV / 2018

Av. Ferreira Viana, 1135 – Pelotas/RS – CEP: 96085-000 Fone: (53) 33101350 – (53) 3227-1513
E-mail: seplag@pelotas.rs.gov.br